



Introducing GIS to Emergency Management

**ESRI International User
Conference**

July 10, 2003



Allen Jakobitz
Hazards Technology Program Manager

Washington State Emergency
Management Division (EMD)

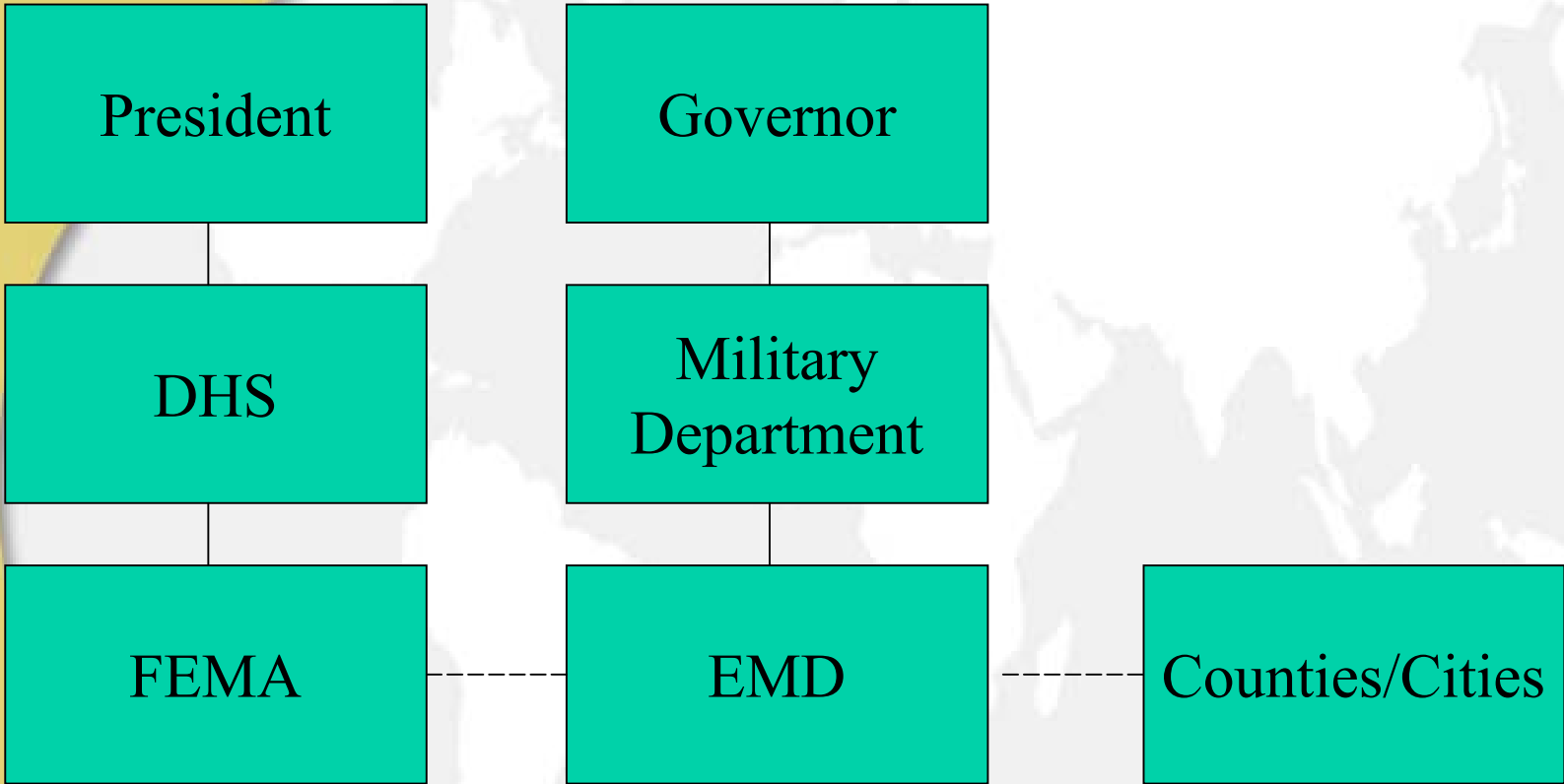
(253)512-7050

a.jakobitz@emd.wa.gov

EMD Geographic Location



EMD Organizational Location



History

- Paper Maps
- Map Drawings
- Modeling Programs
- Internet Applications
- Baby GIS

Steps to GIS

Advice: Find a Champion

- Staffing
- Funding
- Acquisition
- Storage
- Sharing
- Viewing

What base layers

Advice: Roads, Roads, Roads

- Political Boundaries
- Emergency Response Zones
- Other transportation routes
- Key facilities

Where is data

Advice: Don't create your own.

- Internet
- Other Agencies
- Other Jurisdictions
- Finally – Create

How to maintain Metadata

Advice: Do unto others ...

- Protocol
- Procedure



Where to find help

Advice: Make a new friend

- WAGIC
- WAURISA
- CPSUG
- WAHUG
- ESRI User Conference

What training should you provide?

Advice: Go slowly. Be responsive.

- Use GIS Day
- Exploit general meetings
- 5 Minutes of GIS
- Provide one-on-one

Best Laid Plans

- What was planned
- What happened
- What next

